

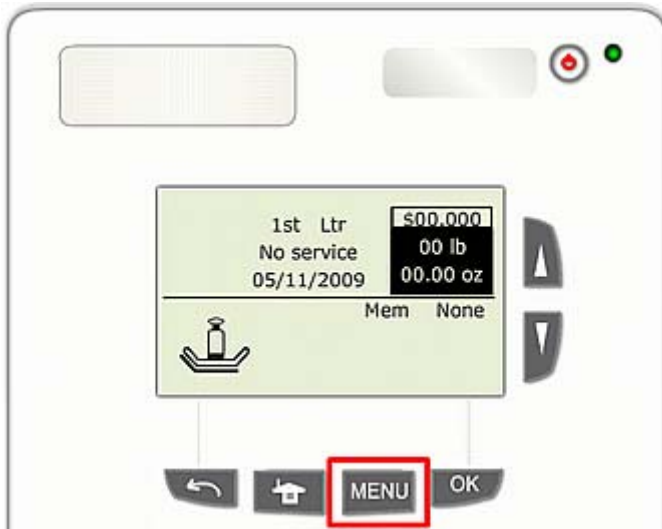
## IM420, IM440 – Loading Rates

The following conditions must be met before loading rates:

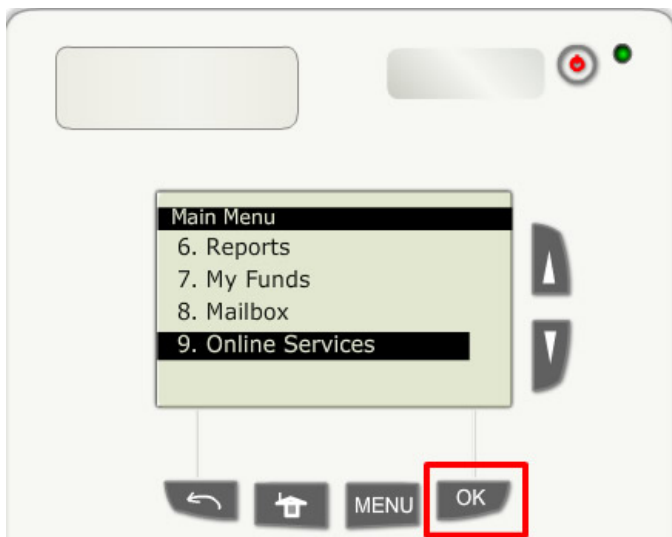
- The customer must have a rate protection contract.
- The machine must be declared.

### **Loading Rates:**

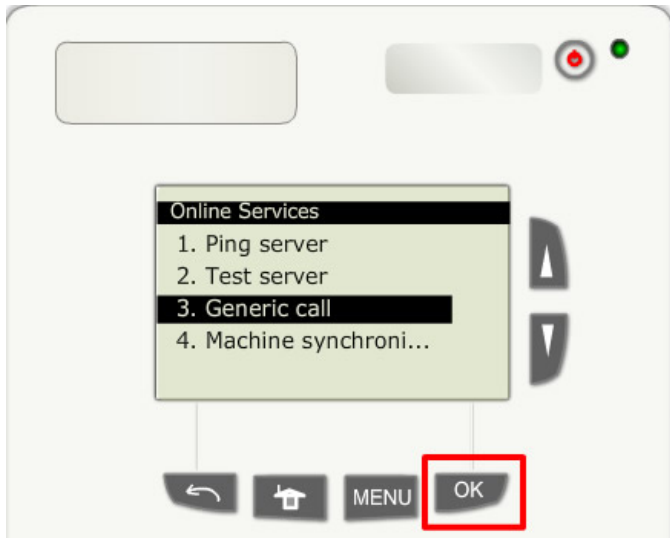
1. Press the “**MENU**” button.



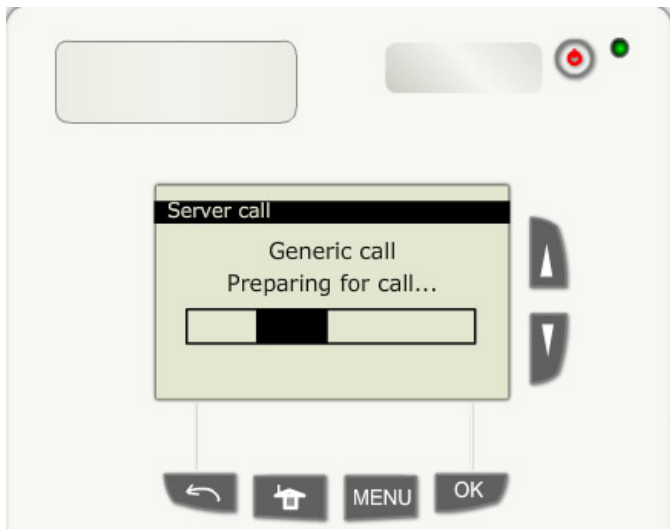
2. Press the down arrow button until “**Online Services**” is highlighted.  
- Press the “**OK**” button.



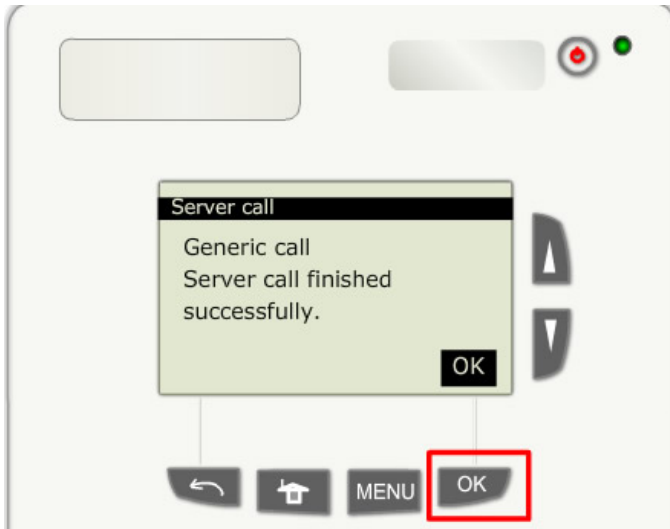
3. Press the down arrow button until “**Generic call**” is highlighted.  
- Press the “**OK**” button.



4. The Generic Call consists of:
  - Preparing for the call
  - Dialing the call
  - Transaction in progress**DO NOT INTERRUPT THIS PROCESS.**



5. The Generic Call finished and the rates loaded successfully.  
- Press the “**OK**” button.



6. Press the “**BACK**” button several times until the homescreen is displayed.

